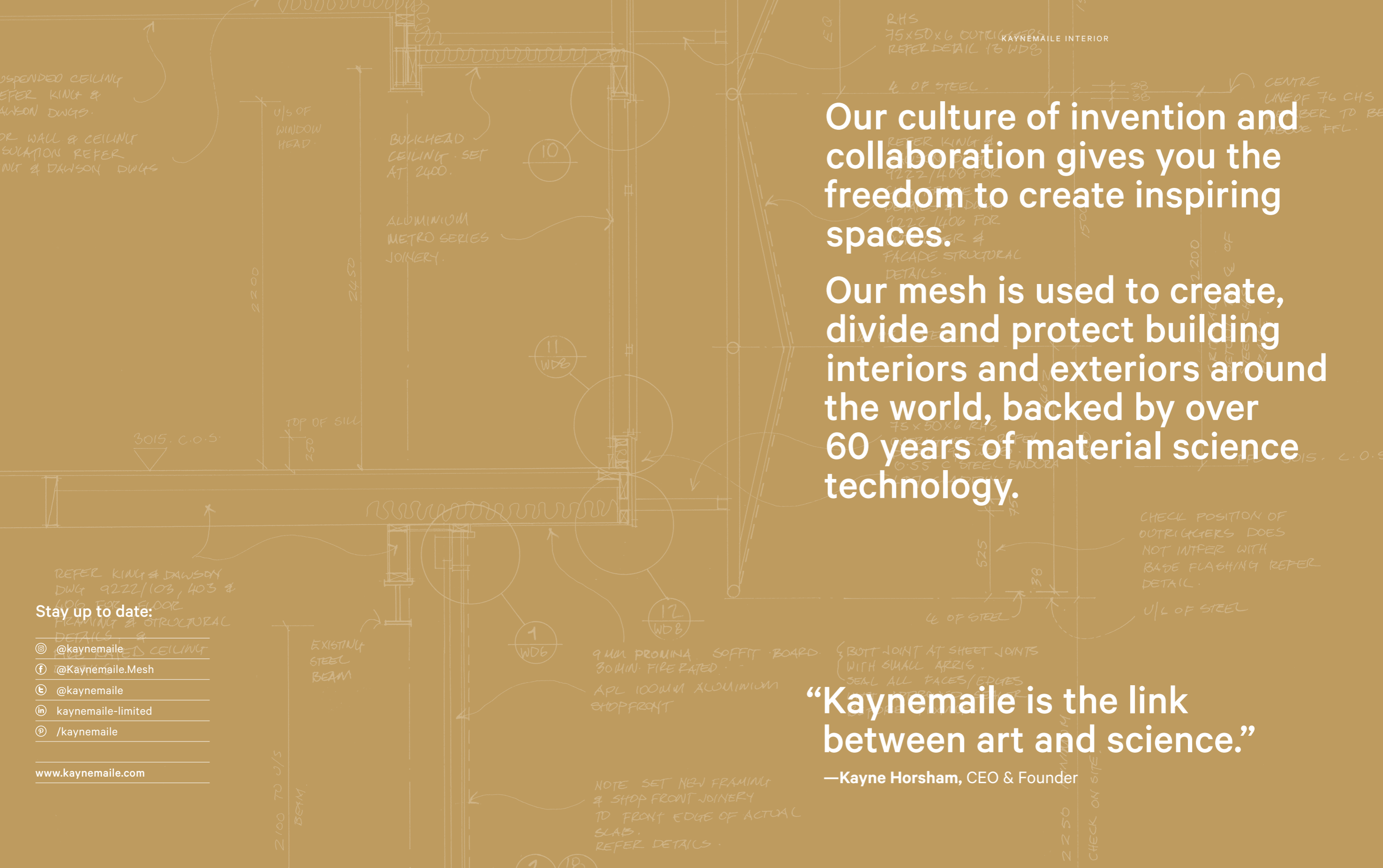


Kaynemaile for Interiors







Our culture of invention and collaboration gives you the freedom to create inspiring spaces.

Our mesh is used to create, divide and protect building interiors and exteriors around the world, backed by over 60 years of material science technology.

“Kaynemaile is the link between art and science.”

—Kayne Horsham, CEO & Founder

Stay up to date:

- © @kaynemaile
- f @Kaynemaile.Mesh
- e @kaynemaile
- in kaynemaile-limited
- p /kaynemaile

www.kaynemaile.com

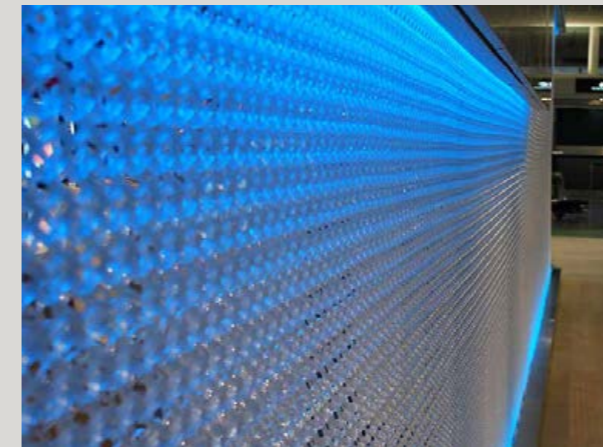
Functional and Beautiful

Kaynemaile gives you the ability to divide and define interior spaces while providing transparency and airflow. Our hanging, folding or framed dividers are suitable for creating privacy and partitioning spaces. Being highly textural they add an artistic element to each space.

Kaynemaile for Interiors

We've developed two simple fixing systems that work across our product range. Our screens are multi-functional and affordable. When our standard products don't suit your project we can create a unique custom solution.

For technical information visit kaynemaile.com/technical or contact us info@kaynemaile.com



Hanging Screens

Kaynemaile hanging screens are a simple ceiling-hung solution. Use them to divide interior spaces, create visual privacy and as decorative backdrops. They can be fixed at the bottom or hung freely.

kaynemaile.com/hanging-screens

Folding Screens

Kaynemaile folding screens can be used to divide spaces temporarily. They are ideal for creating intimate spaces within open plan areas. Our lockable folding screens provide additional security if required.

kaynemaile.com/interior-folding-screens

Framed Screens

Kaynemaile framed screens are designed to fit into framed openings and work perfectly in doors, windows and cabinetry.

kaynemaile.com/framed-screens

Lighting

Kaynemaile mesh can be used for beautiful lighting features and chandeliers. Kaynemaile lighting features are an eye-catching and cost-effective way to elevate your interior projects.

kaynemaile.com/lighting

Ethereal Screening

PRODUCT

Kaynemaile Hanging Screen

DESIGN

Studio Arquitectonica, Studio Dolce Vita Homes,
Antonio Citterio, Patricia Viel and Partners and
Coima Image

LOCATION

Milan, Italy

This translucent Water Clear hanging screen floats within the reception of the prestigious Torre Solaria apartment building. Installed as one large seamless piece the screen creates an ethereal atmosphere in the spacious foyer. An elegant solution for solar shading and sound reduction in a large space.

Solaria





↑ ABOVE: The Water Clear mesh screen curves through the Dubai Chamber of Commerce.

→ RIGHT: The Water Clear mesh creates privacy while keeping good visibility and airflow in the space.



KAYNEMAILE INTERIOR

Curve Division

PRODUCT

Kaynemaile Hanging Screen

DESIGN

Bluehaus Group

LOCATION

Dubai, United Arab Emirates

This single piece curved hanging screen at the Chamber of Commerce in Dubai provides elegant separation while maintaining visual transparency. Kaynemaile's simple fixing systems allow curves to be easily specified and work perfectly with feature ceilings.



Photography by Jason Mann

KAYNEMAILE INTERIOR

Dividing Work Spaces

PRODUCT

Kaynemaile Hanging Screen

DESIGN

Sheppard & Rout

LOCATION

Christchurch, New Zealand

This hanging screen in a new office fitout provides visual privacy while maintaining transparency and uninterrupted airflow. The large screen curls around storage units and office equipment, providing a functional component to an elegant screening solution.




ChristchurchNZ



KAYNEMAILE INTERIOR

Functional Separation

PRODUCT

Kaynemaile Hanging Screen

LOCATION

Wellington, New Zealand

↑ **TOP:** The two hanging screens separate the kitchen from an informal dining area and add an interesting textural element to the space.

Photography by Jason Mann

Our versatile hanging screens are great for space separation in co-working office spaces. Sectioning the kitchen from meeting areas, hiding printers from view or reception areas from work spaces is what these screens do best.



KAYNEMAILE INTERIOR

Curves and Coffee

PRODUCT

Kaynemaile Hanging Screen

DESIGN

TD Solutions

LOCATION

Ho Chi Minh City, Vietnam

Photography by Quang Daim

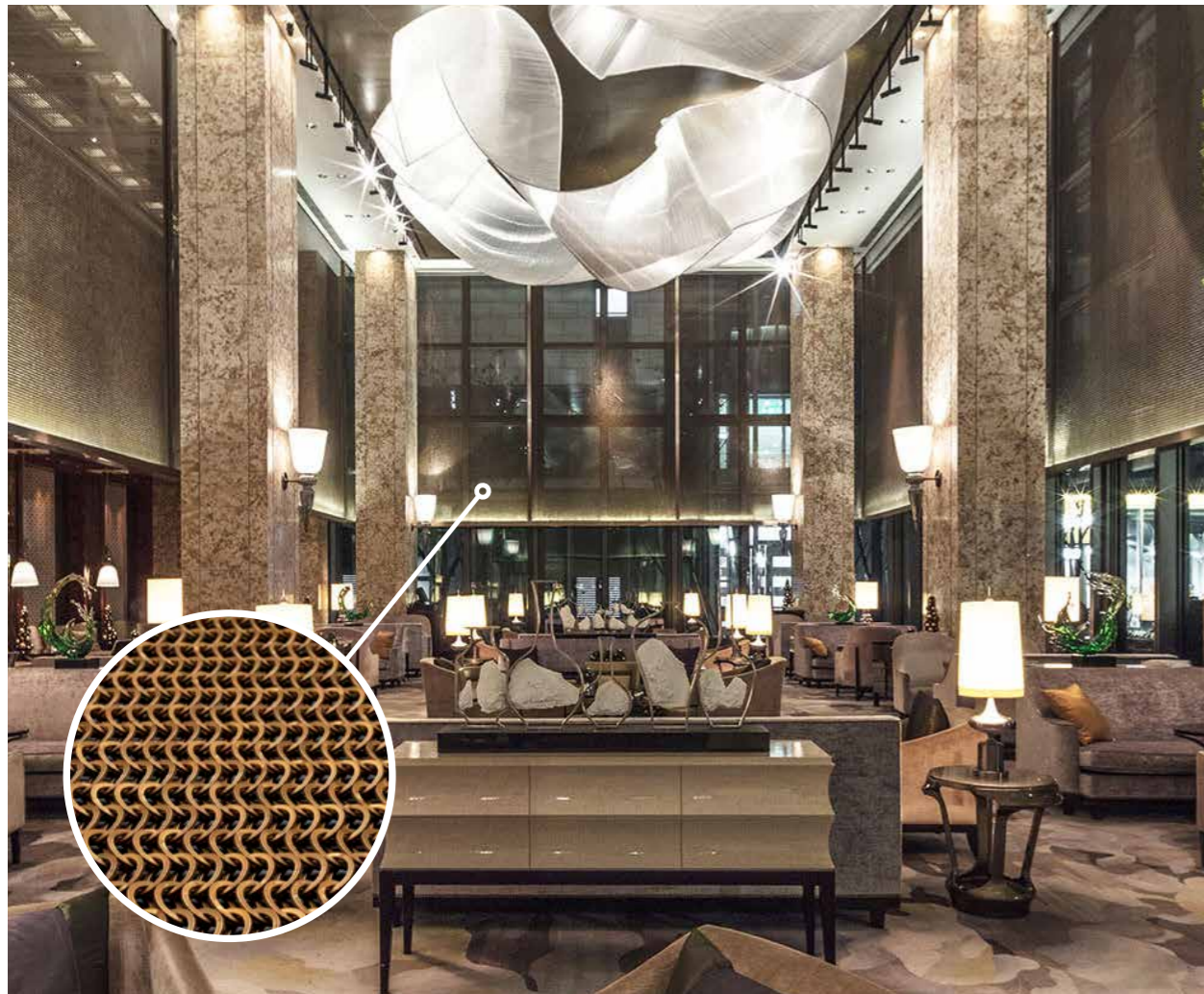
This new coffee house seamlessly blends Kaynemaile hanging screens within a contemporary yet classically inspired fit-out.



Elegant Shading

PRODUCT Kaynemaile Framed Screen | DESIGN LTW Designworks | LOCATION Hangzhou, China

Located in Hangzhou's opulent Shangri-La Hotel this framed screen serves a dual purpose of decorative and solar reduction, helping to cut the sun's heat from entering the atrium. With the ability to take architectural lighting beautifully, Kaynemaile is perfect for feature screening in high profile locations.



Photograph by Edimon Leong

Security at Scale

PRODUCT Kaynemaile Hanging Screen | DESIGN GMW London | LOCATION Medina, Saudi Arabia

With 16 million passengers predicted by 2037 the material requirements for Medina's new airport terminal in Saudi Arabia were critical. Kaynemaile exceeded these requirements, providing airflow and security in single piece fire rated screens up to 90 metres in width and 14 metres high. Our hanging screens prove that barriers can be functional and beautiful.



Folded Functionality

PRODUCT

Kaynemaile Folding Screen

DESIGN

CTRL Space

LOCATION

Wellington, New Zealand



↑ ABOVE: The folding screen maintains airflow and transparency.

← LEFT: The folding screen can simply be pushed along the track to open. We use our own head track system and don't rely on a bottom track.

Photography by Sarah Grace

The Obsidian Black folding screen installed in the FCB advertising agency divides the office to create two functional rooms when required and can easily be retracted to open up the space.

Securing Open Spaces

PRODUCT

Lockable Folding Screen

DESIGN

Athfield Architects

LOCATION

Christchurch, New Zealand



Photography by Jason Mann

Used to divide and secure this multi-use space our lockable folding screens provide security as well as great visibility and airflow. A perfect solution for this library and community hub.



↑ TOP: The two lockable screens within the space can be moved easily to separate sections of the library.

↑ BTM: The intermediate locking posts are positioned regularly within the screen and easily fit into floor sockets.

→ RIGHT: Our elegant, contemporary hardware blends seamlessly into new and existing settings.



Beautiful Protection

PRODUCT

Custom Office Balustrade

DESIGN

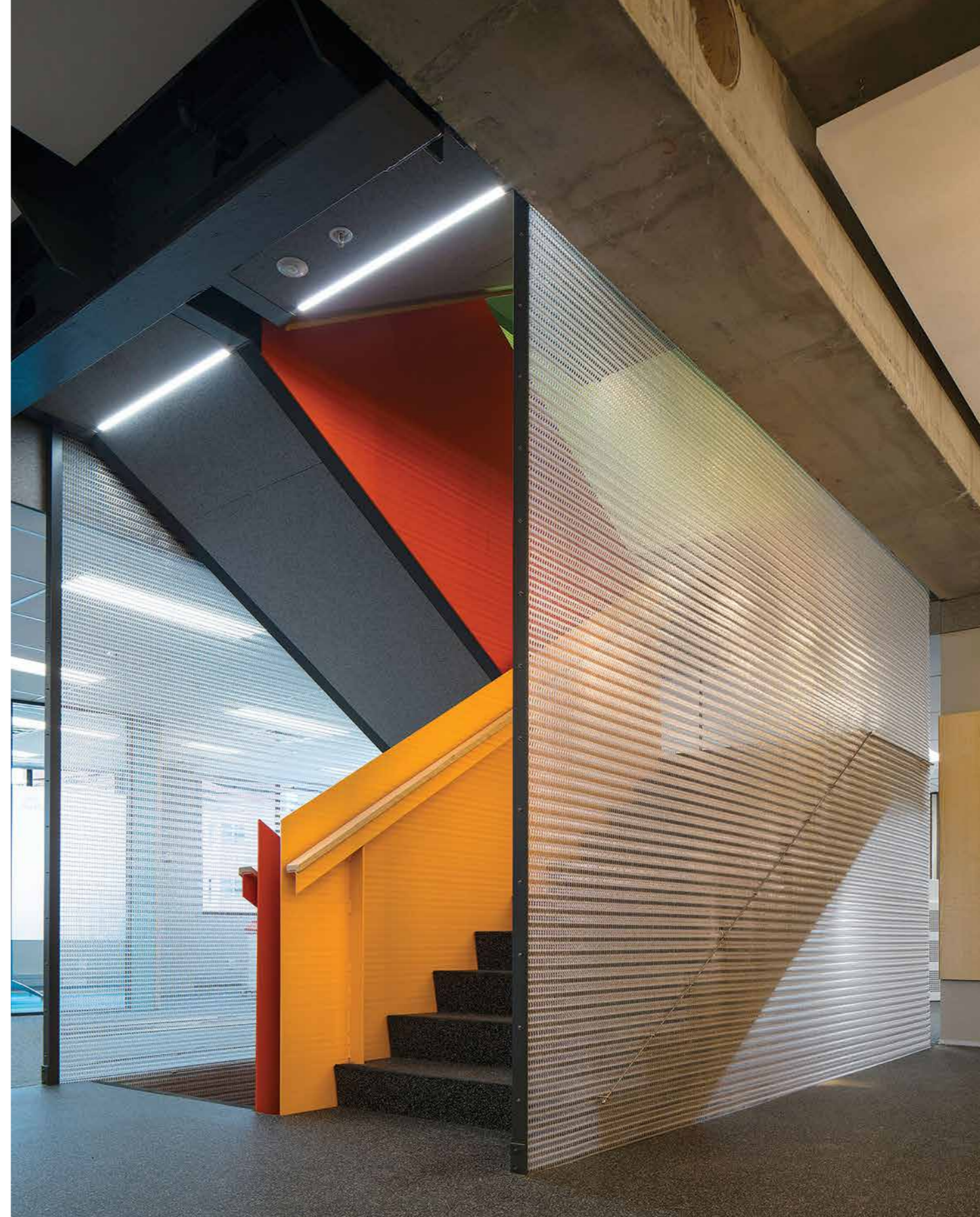
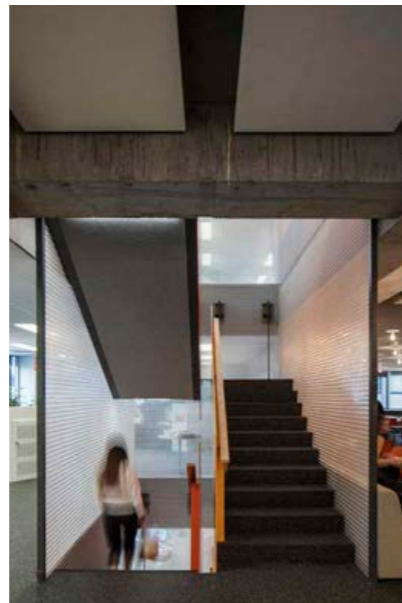
architecture+

LOCATION

Wellington, New Zealand

Kaynemaile developed a unique solution for balustrading over a three-storey stairwell in an office fitout. Reaching from floor to ceiling and installed as one single piece, our Water Clear mesh gives a translucent effect and removes the need for extra handrails and fixings. A simple, stunning and cost effective way to link three floors together.

Photography by Andy Spain & Darin Phillips+Brown



↑ ABOVE: The screen was fabricated and installed as one piece and integrates with security doors at the bottom level.



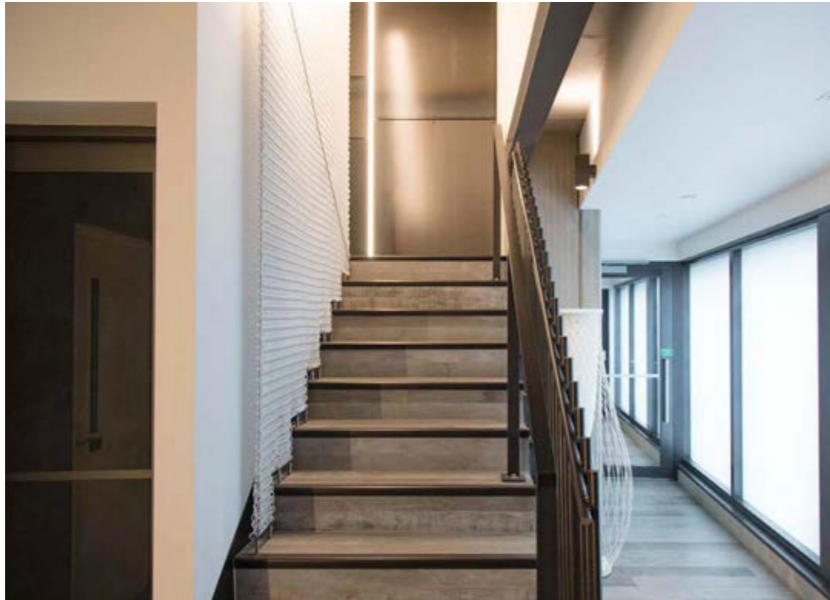
KAYNEMAILE INTERIOR

Simple and Safe

PRODUCT

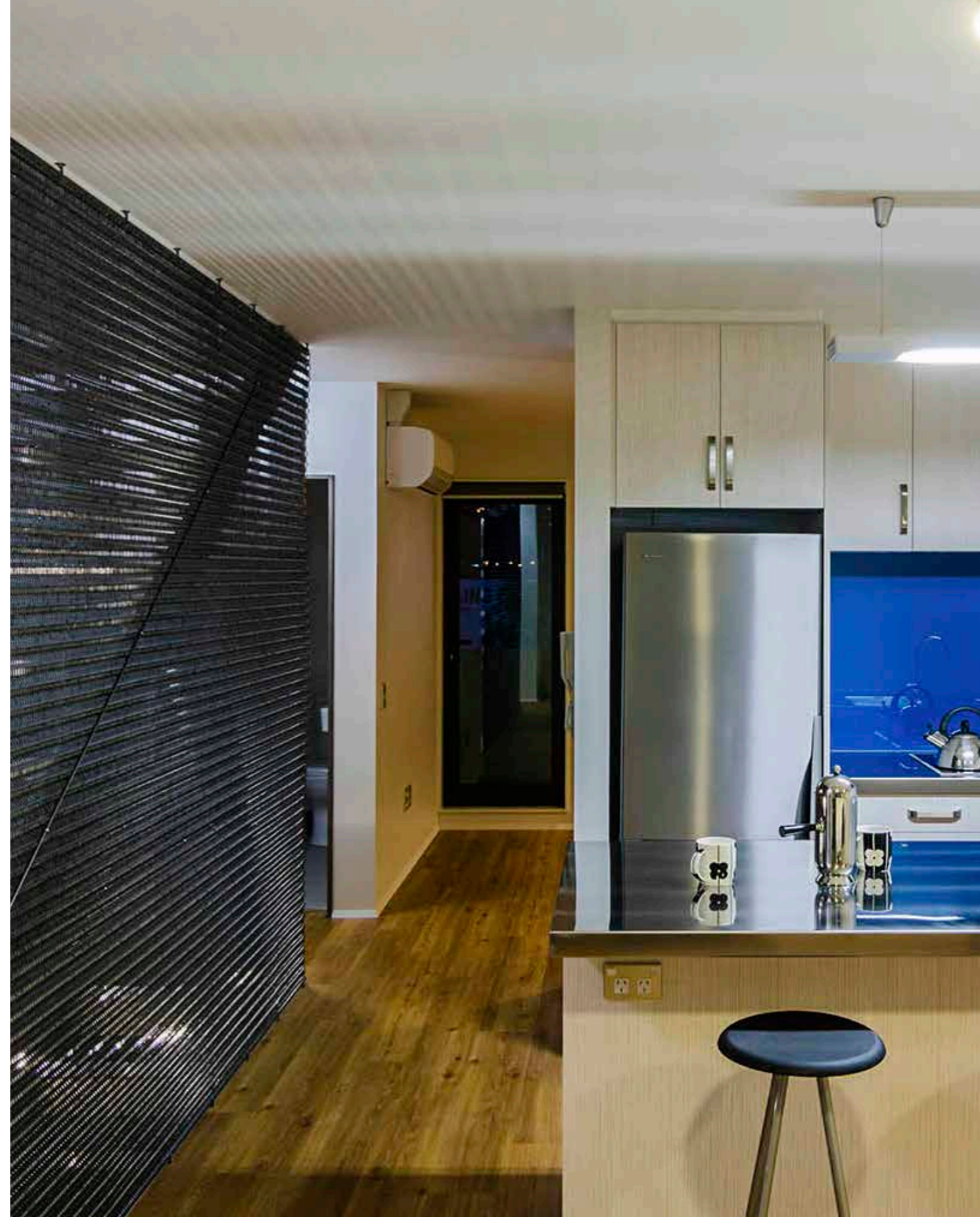
Residential Stairwell Balustrades

Our systems are simple and work perfectly on large and small scale projects. We use the same systems on our commercial projects as we do on our residential ones—giving a high level of strength without the need for excessive fixings.



← **OVER:** This apartment balustrade designed by A.D Architecture works beautifully with the surrounding interior materials.

↑ **TOP & BTM:** Our simple fixings blend seamlessly into this contemporary residential design by Leushke Group Architects.







KAYNEMAILE INTERIOR

Lightening the Mood

PRODUCT

Custom Ceiling Feature

DESIGN

LMN Architects, Schooley Caldwell

LOCATION

Ohio, USA

LMN Architects created two custom ceiling features at the Greater Columbus Convention Centre. Both ceilings incorporated undulating lengths of Kaynemaile Water Clear mesh hung between each ceiling baffle. With LEDs next to the mesh Kaynemaile gives huge scope for lighting effects.

Photography credit — Brad Feinknopf, OTTO, Raven & Snow





Photography by Jason Mann

KAYNEMAILE INTERIOR

Playful Movement

PRODUCT

Custom Ceiling Feature

DESIGN

Designworks

LOCATION

Christchurch, New Zealand

Inspired by a nearby winding river, the beautiful Kaynemaile Bronze mesh ceiling feature at the Crowne Plaza Hotel is lit from above and brings a warmth to the space as guests arrive. Our mesh gives approximately 80% airflow through the cross sectional open area, allowing air compliant movement to be maintained.





KAYNEMAILE INTERIOR

Dramatic Heights

PRODUCT

Kaynemaile Hanging Screen

DESIGN

Warren & Mahoney

LOCATION

Christchurch, New Zealand



↑ ABOVE: The curved screen works perfectly for events within the space and looks great when lit.

← LEFT: The hanging screen creates separate functional meeting areas within a larger space while maintaining airflow and transparency.

The Water Clear hanging screens at the Christchurch Art Gallery creates multiple functional spaces. A great option for space division without the need for solid structures or temporary walls.

All you need to know about Kaynemaile mesh.

Kaynemaile’s polycarbonate mesh is a patented, world-leading innovation. With over 60 years of polycarbonate material science and research to call on we know our mesh inside out. We’ve undertaken extensive laboratory and field tests to ensure our product range works and we keep testing it everyday. We think the benefits of our product are extraordinary.



70% Solar Reduction

Kaynemaile significantly reduces both radiant heat through direct sunlight (EMR) and thermal conductive heat from entering the interior of a building by up to 70%. This gives you the ability to let daylight in and manage the passive solar gain—all while maintaining visual transparency.



Super Fast Installation

Kaynemaile is lightweight (3kg per square metre) and goes up fast, cutting down the install time dramatically and saving costs. Our fixing systems are simple and we don’t need the same level of sub-frame as metal products. This means our installed rate is more cost effective than metal or glass panel products.



Unlimited Screen Size

We are not limited by panel size—we can make our screens to any height or width without joins or distracting gaps. This gives you freedom at the design concept stage that other materials don’t. Making our screens to the size you need them means less structure, less fixings, and less time on site.



Eco-conscious Manufacturing

We are constantly striving to reduce the environmental footprint of our business. Our unique manufacturing process means we only make what we need. Our materials are fully recyclable using low-energy processes.



10 Year Warranty

Kaynemaile has a 10-year standard warranty. Our seamless mesh is UV stabilised using inorganic colours for long term stability and full recyclability.



Trusted Durability

Metal based materials corrode and oxidise in coastal conditions. Kaynemaile does not. Our mesh holds true to its tensile strength. We use mineral colour-fast pigments that will not stain your building when it rains, unlike traditional metal mesh materials.



Unbeatable Strength

Our mesh is made from the highest performing thermoplastic. It is extremely robust and impact resistant. Thermally stable from -40°F to 248°F (-40°C to 120°C).



Simple Attachment Systems

Our attachment methods for both exterior and interior systems are simple and based around two systems that utilise tube and hooks or extruded aluminium fixings. Even our custom projects are based around these simple attaching systems. For fixing details, contact us at info@kaynemaile.com.



Fire Performance
Class 1 or A

Test	Result
GLOBAL	
ISO 9705 Room Corner Test <i>Equivalent US NFPA 286 room corner classification (Class A*) performance</i>	1-S
IMO Resolution A.652	Pass smouldering cigarette & match flame equivalent
UL94-VO/3.0	Self-extinguishing
USA	
NFPA 701	Pass
Conforming with section 803.12 stability at 200°F	Pass
ASTM D 2843	Smoke Index of 70.9
ASTM 635	Class HB-CC1
ASTM D 1929 Self-Ignition Temperature	968°F (520°C)
ASTM D 1929 Flash Ignition Temperature	842°F (450°C)
ASTM D 2843 Smoke Density Rating	70.9
EU	
DIN 4102 part 1	Pass B1
NZ / AU	
AS 1530.2	Flammability index result of (FI) = 6
AS 1530.3	Regulatory indices - Ignitability index = 0, Spread of flame index = 0, Heat evolved index = 0

Colour Options

Kaynemaile can be produced in virtually any colour, giving you unlimited options for your exterior or interior project.

Colour Details

We offer a range of standard colours (pictured right) which can be used for exterior and interior applications.

Interior Colours

All Kaynemaile standard colours are suitable for interior use.

Exterior Colours

Our standard Kaynemaile colour range for exterior use includes: Bronze, Copper, Steel, Obsidian Black, Translucent Black, Silver and Champagne.

Finishes

All colours are in a gloss finish.

Custom Colours

Kaynemaile can manufacture virtually any custom colour for you. We work off standard RAL or Pantone colour codes. Supply us the colour codes and we can provide the swatches for final approval before manufacture.

Additional charges may apply for custom colours. Talk to the Kaynemaile team for details.

Warranty

We stand behind our products and offer a longer warranty period than most of our competitors.

We have a 10-year warranty on all Kaynemaile hardware and mesh for both interior and exterior applications.



White Gloss

Ruby Red

Azure Blue

Water Clear

Jade Green

Ice Blue

Bronze

Copper

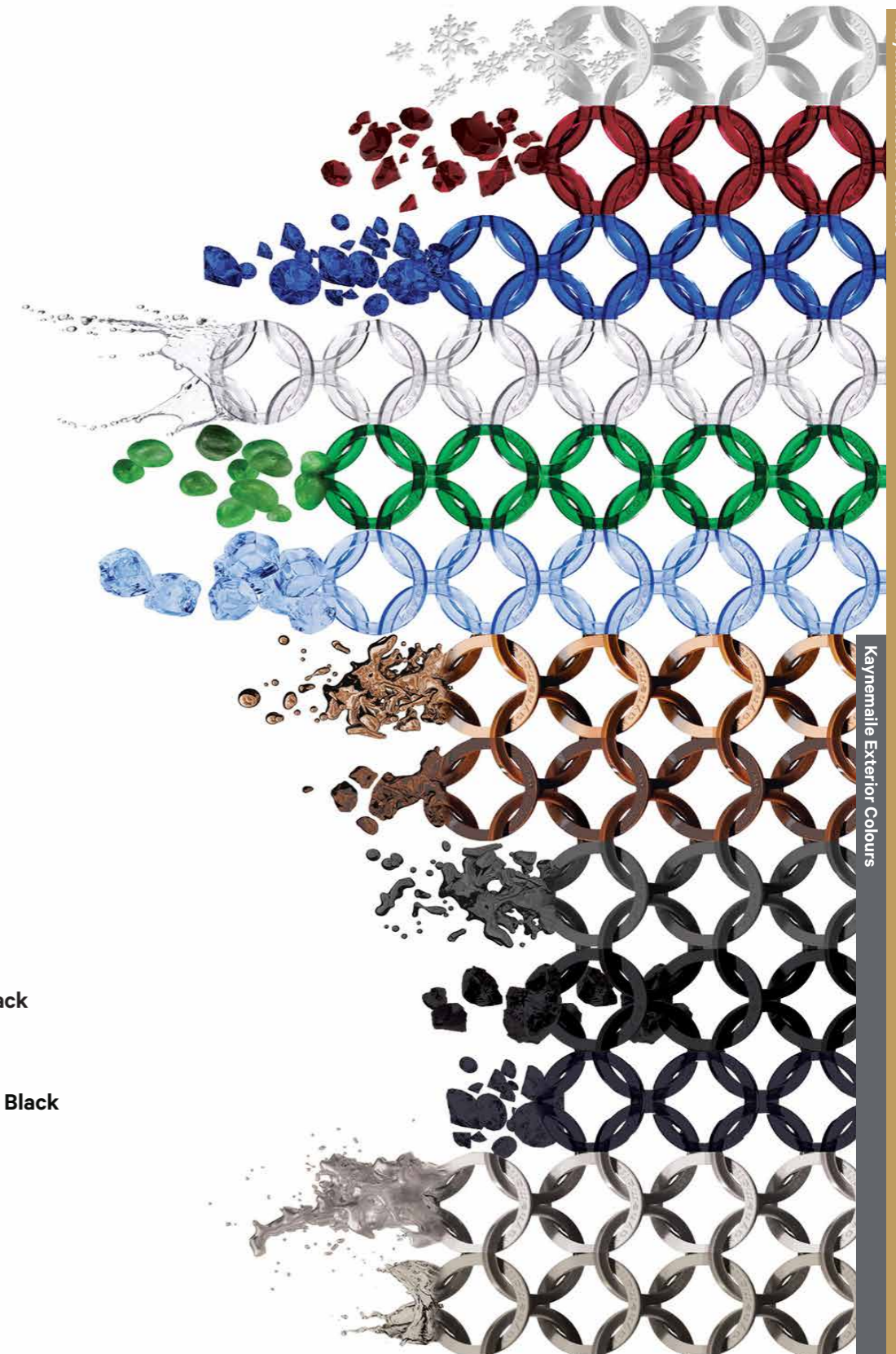
Steel

Obsidian Black

Translucent Black

Silver

Champagne



Kaynemaile Interior Colours

Kaynemaile Exterior Colours

Kaynemaile Hanging Screens

Kaynemaile Hanging Screens are a simple ceiling-hung solution utilising a stainless steel hanging tube and ceiling hook system. Use them to divide interior spaces, create visual privacy and as decorative backdrops. Hanging Screens can be tensioned at the bottom with additional floor fixings.

For more visit:
www.kaynemaile.com/hanging-screens

Features

Weight: 0.6lbs/ft² (3kg m²)

Sizes: Unlimited in size.

Colour palette: All Kaynemaile standard colours are suitable for interior use. For colour range see page 54 of this booklet.

Custom shapes: We can make curved screens. Contact Kaynemaile to discuss your requirements.

Hanging system: 0.5in (12.7mm) diameter stainless steel hanging tube and our proprietary stainless steel ceiling hooks. Spacing of hooks is approximately 19.5in (500mm).

Supplied hardware: Hanging screens are supplied with Kaynemaile mesh and all hanging hardware you need for installation.

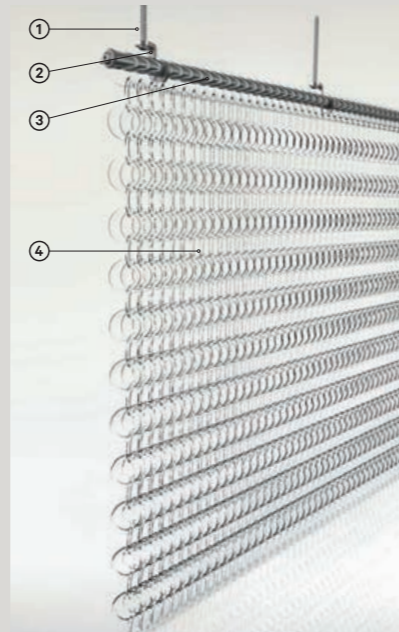
Hanging System

Our systems are simple—screw the supplied hooks into your ceiling substrate and hook the hanging tube over the hooks. Large screens are supplied with lifting cord to help you install. Let us know what your ceiling substrate is and we will supply the correct screws.

To create a semi-rigid screen our hanging screens can be fixed to the floor as well as the ceiling utilising a stainless steel tube and hook system.

Standard Top Fixing Detail

- 0.5in (12.7mm) stainless steel hanging tube, with proprietary stainless steel hooks at 23.5in (600mm) approximate centres.
- Standard screen fixings are available for timber, steel and masonry.



Additional fixings can be added at the bottom for screen tension



- ① Fixing Screw
- ② S/S Hook
- ③ S/S Hanging Tube
- ④ Kaynemaile Mesh

Kaynemaile Framed Screens

Kaynemaile Framed Screens are designed to fit into framed openings and work perfectly with sliding doors, screens and window openings. They are perfect with cabinetry, retail point-of-sale and commercial applications and look great with feature lighting.

For more visit:
www.kaynemaile.com/framed-screens

Features

Weight: 0.6lbs/ft² (3kg m²)

Sizes: Unlimited in size.

Colour palette: All Kaynemaile standard colours are suitable for interior use. For colour range see page 54 of this booklet.

Custom shapes: Curved screens can be manufactured. Contact Kaynemaile to discuss your requirements.

Supplied hardware: Framed screens are supplied with Kaynemaile mesh, low profile edge track and mesh saddles along with standard screw fixings for timber, steel and masonry attachment.

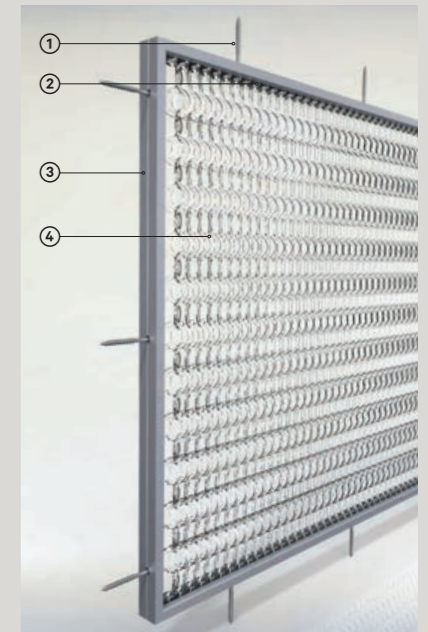
Hanging System

Kaynemaile framed screens utilise our 0.9in high x 0.39in wide (23mm x 10mm) low profile anodised aluminium track at all edges combined with our polycarbonate mesh saddles that clip the mesh in under light tension.

Our low profile track is designed to fix directly to a substrate or framework and comes pre-drilled at 7.87in (200mm) centres for fast install.

Frame Requirements

As these screens are under light tension a suitable frame structure is required. For small to medium cabinetry installations most typical framework will be suitable. Larger feature screens will require a suitable substructure.



- ① Fixing Screw
- ② Polycarbonate Mesh Saddle
- ③ Low Profile Aluminium Track
- ④ Kaynemaile Mesh

Kaynemaile Folding Screens

Kaynemaile Folding Screens can be used to divide spaces temporarily then retracted when not needed. They are ideal for creating smaller, more intimate spaces within big open plan areas. Perfect for restaurants and bars, open plan offices or event spaces where flexibility is required.

Features

Stack ratio: Approx. 15% of the overall width.

Weight: Mesh weighs 0.6lbs/ft² (3kg m²). Head track and folding system weighs approx. 1lb per linear foot (1.6kgs per linear metre).

Sizes: Standard components up to 13ft (4m) high with unlimited width. Screens over 13ft (4m) high may require upgraded componentry.

Colour palette: All Kaynemaile standard colours are suitable for interior use. For colour range see page 54 of this booklet.

Curved Screens: We can manufacture custom curved screens. Our standard minimum radius is 40in (1000mm). Contact Kaynemaile to discuss your custom requirements.

Folding leaf width: 16.73in (425mm) typical. Allow running clearance width of a minimum of approx. 25.5in (650mm).

Hanging system

- **Head track:** 2.16in high x 1.38in wide (55mm x 35mm) anodised aluminium.
- **Folding mechanism:** Stainless steel folding armatures.
- **Wheels:** Nylon wheels. Stainless steel componentry.
- **Operation:** Wand style pull handle. Satin stainless steel finish.

Supplied hardware

Folding screens are supplied with Kaynemaile mesh, head track and folding armature system. Screw fixings are also supplied to fix into your ceiling or support structure. Track screw fixings are required every 15.75in (400mm) approx.

Configuration

We can incorporate single or split leaves on one head track run. Either end can be specified as fixed to a wall or post or both can be open and operable.

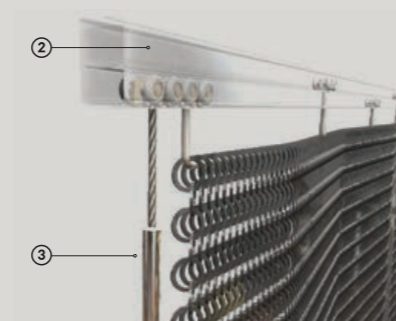
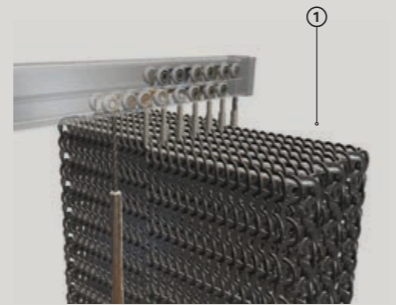
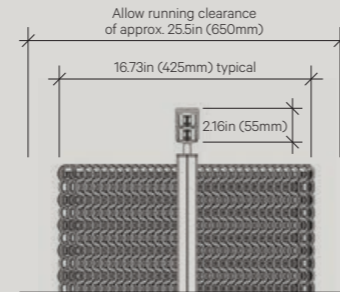
Operation

Our screens are easily opened and closed using our satin stainless-steel operating wand.

Site requirements

Ceiling head track—our track needs to be fixed into a rigid and level sub-structure strong enough to support the weight and operation of the screen. Suspended or lightweight ceilings are not suitable as substrates and will require additional blocking or sub-structure.

Vertical ends—fixed ends require a suitable substrate to attach the vertical track to. Plaster board or light weight wall linings are not suitable.



- ① Screen Open View
- ② Top Track and Screen Section
- ③ Wand

For more visit:
www.kaynemaile.com/folding-screens

Kaynemaile Lockable Folding Screens

Kaynemaile Lockable Folding Screens provide additional security with the ability to fix and lock one end. Perfect for interior applications such as retail malls, offices, libraries, schools and anywhere else you need to create a secure space.

Features

Stack ratio: Approx. 15% of the overall width.

Weight: Mesh weighs 0.6lbs/ft² (3kg m²).

Sizes: Standard components up to 9.84in (3m) high with unlimited width. Screens over 9.84in (3m) high may require upgraded componentry.

Locking mechanism: Vertical stainless-steel post with a throw bolt into an inset floor socket and top track.

Colour palette: All Kaynemaile standard colours are suitable for interior use. For colour range see page 54 of this booklet.

Radius: We can manufacture custom curved screens. Our standard minimum radius for our track is 40in (1000mm). Contact Kaynemaile to discuss your custom requirements.

Folding leaf width: 16.73in (425mm) typical. Allow running clearance of approx. 25.5in (650mm).

Hanging system

- **Head track:** 2.16in high x 1.38in wide (55mm x 35mm) anodised aluminium.
- **Folding mechanism:** Stainless steel folding armatures at top and bottom of the screen.
- **Wheels:** Nylon wheels
- **Operation/handle:** In-built lock system to our end lock post.

Supplied hardware

Our lockable screens are supplied with Kaynemaile mesh, head track, folding armatures, locking post system and floor sockets. Screw fixings are also supplied to fix into your ceiling or support structure.

Locking

Our locking systems can be re-keyed to suit your requirements. Contact Kaynemaile to discuss.

Configuration

We can incorporate single or split leaves on one head track run. Either end can be specified as fixed to a wall post, or both ends can be open and operable.

Site requirements

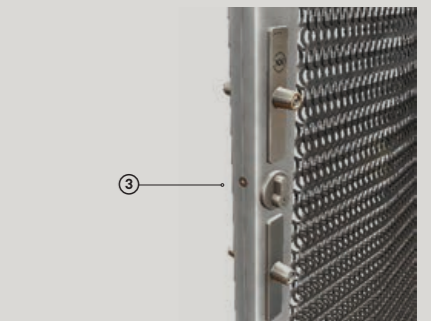
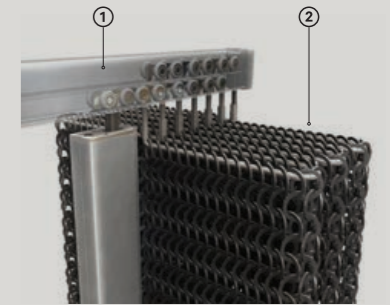
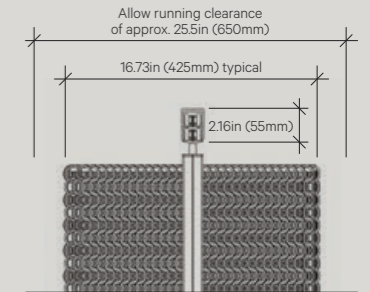
Ceiling head track—our track needs to be fixed into a rigid and level sub-structure strong enough to support the weight and operation of the screen. Suspended or lightweight ceilings are not suitable as substrates and will require additional blocking or sub-structure.

Fixed vertical ends require a suitable substrate to attach the vertical track to. Plaster board or light weight wall linings are not suitable.

Our locking post pins go into the floor through our inset floor socket. The inset depth can vary based on your floor conditions however your floor needs to be level to +/- 0.39in (10mm) across the full width otherwise the lockable posts will drag on the floor as the screen is operated.

Tiles or uneven floor surfaces may not be suitable for our system. Contact Kaynemaile to discuss.

For more visit:
www.kaynemaile.com/lockable-folding-screens



- ① Top Track and Screen Section
- ② Screen Open View
- ③ Locking Post View

Kaynemaile for exteriors is lightweight and goes up fast, cutting construction timeframes and labour costs. We can make our screens to any height or width without joins.

Collaborate with us

We're happy to answer your questions — from product information to technical assistance. Call or send us an email. We're here to help.

For more visit: kaynemaile.com/exterior

Kaynemaile
Architectural Mesh

CONTACT US

USA Toll Free 1855 387 5440

AU Toll Free 1800 231 153

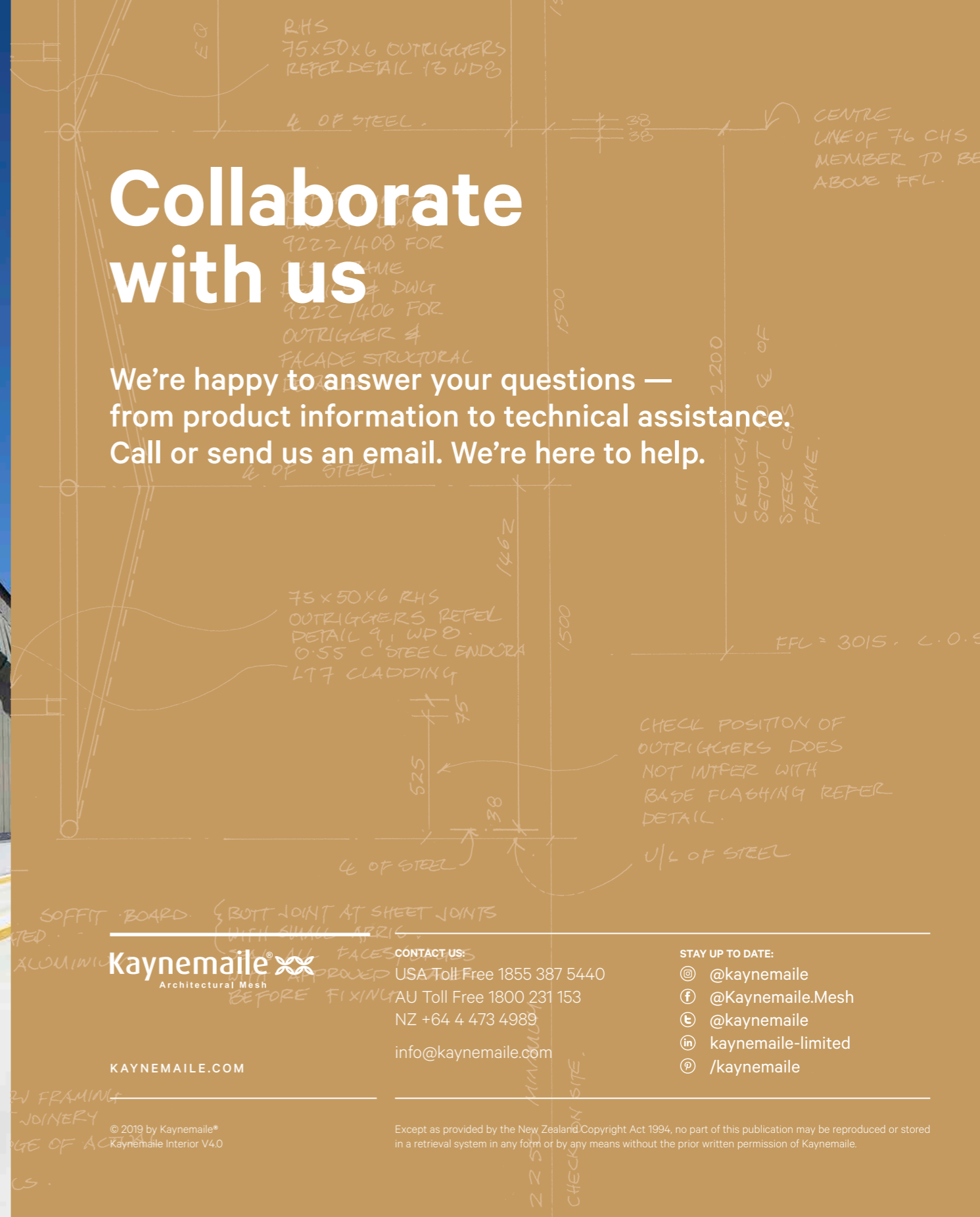
NZ +64 4 473 4989

info@kaynemaile.com

KAYNEMAILE.COM

STAY UP TO DATE:

- 📍 @kaynemaile
- 📌 @Kaynemaile.Mesh
- 📞 @kaynemaile
- 🏢 kaynemaile-limited
- 📄 /kaynemaile



Kaynemaile® 
Architectural Mesh

INTERIOR 
DESIGN
NYC
X DESIGN
2017 AWARDS WINNER